



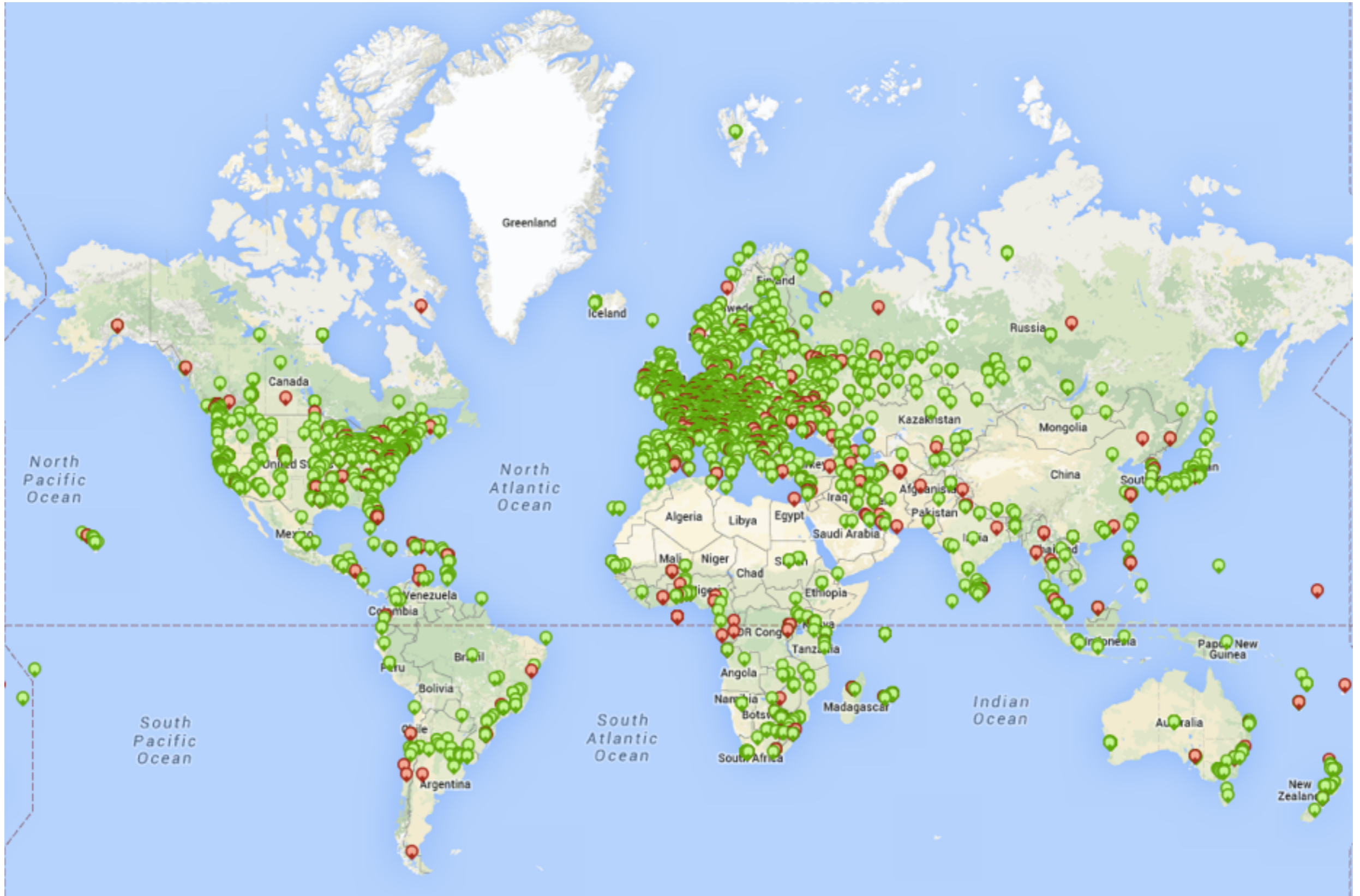
**RIPE**  
**NCC**

## **RIPE Atlas streaming**

---

Massimo Candela  
Science Division  
RIPE NCC

[mcandela@ripe.net](mailto:mcandela@ripe.net)



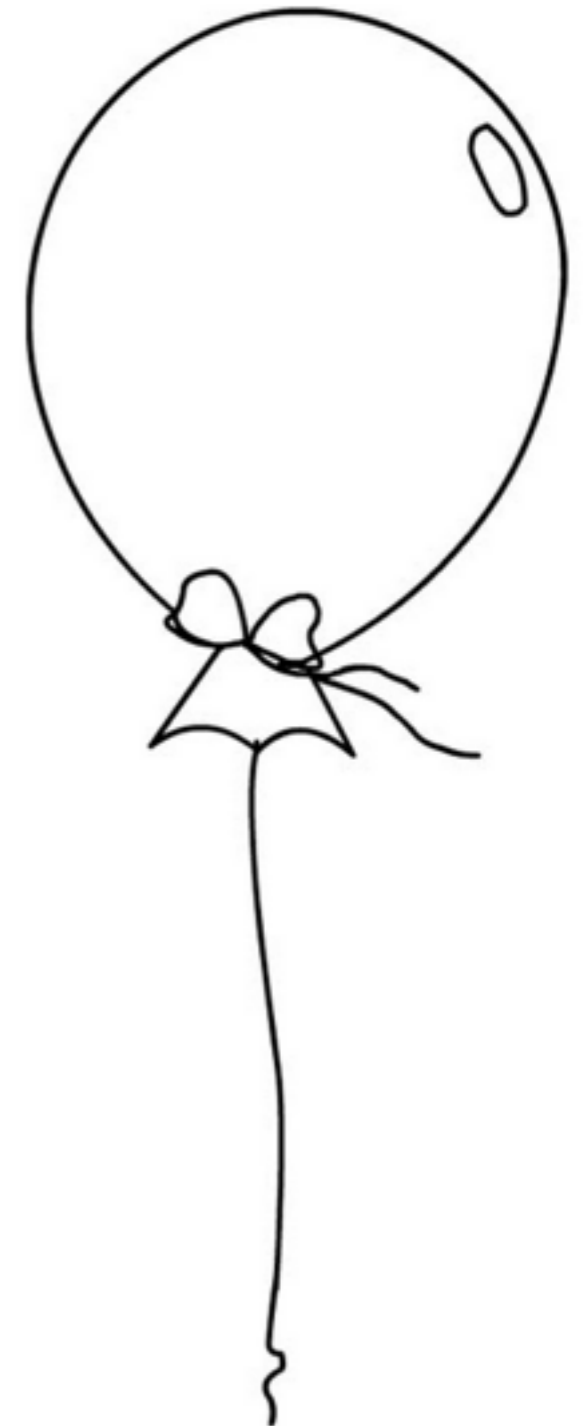


- 8,200+ probes connected (119 Anchors)
- 2,500+ results collected per second
- 35,000+ user-defined measurements weekly
  - **Five** types of user-defined measurements available to probe hosts and RIPE NCC members: ping, traceroute, DNS, SSL, **NTP** (new)

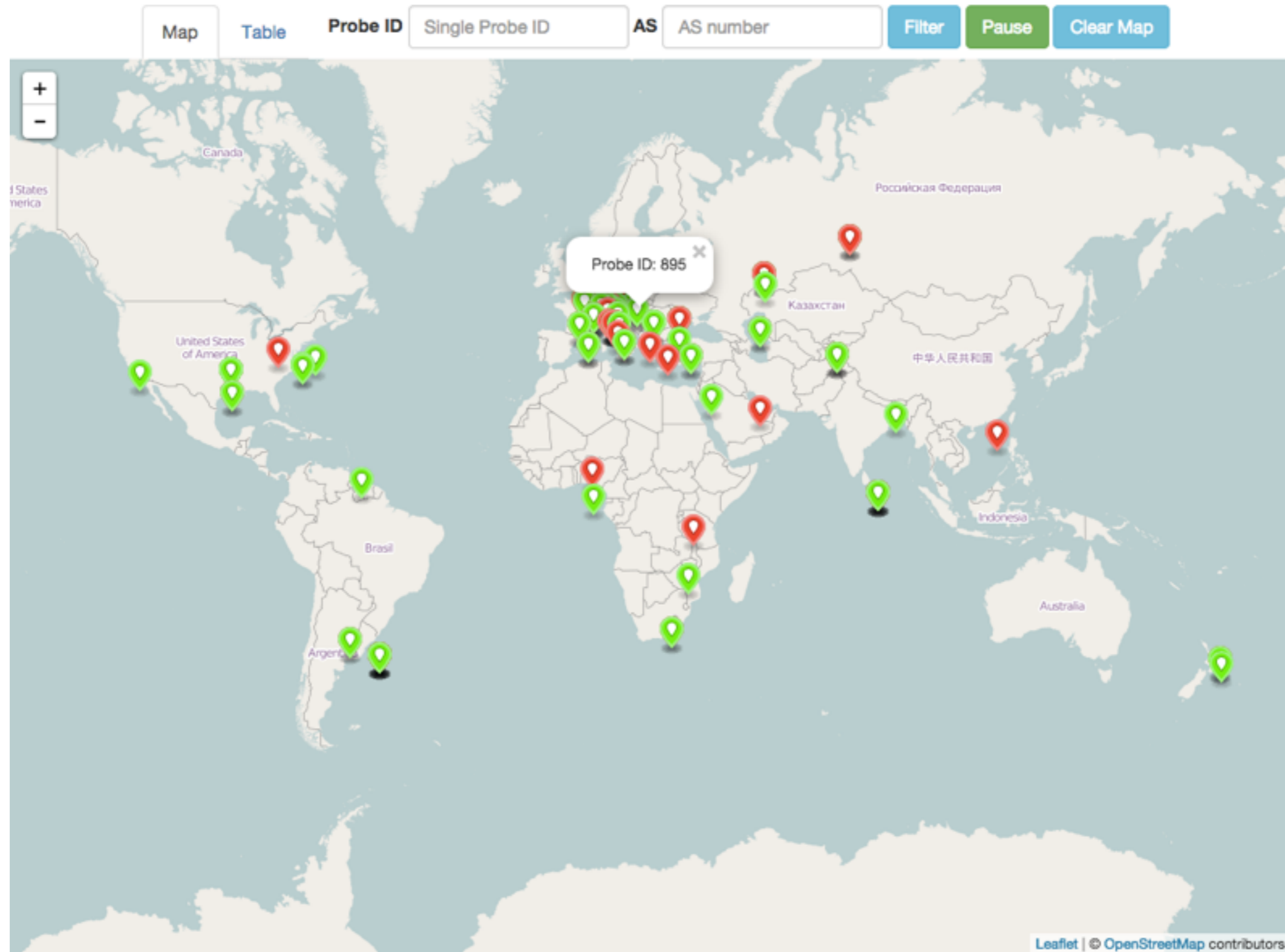
After the measurement results are collected, processed and stored, they are **downloadable** in JSON format or **visualisable** some minutes later

**It would be nice to monitor a network in real-time!**

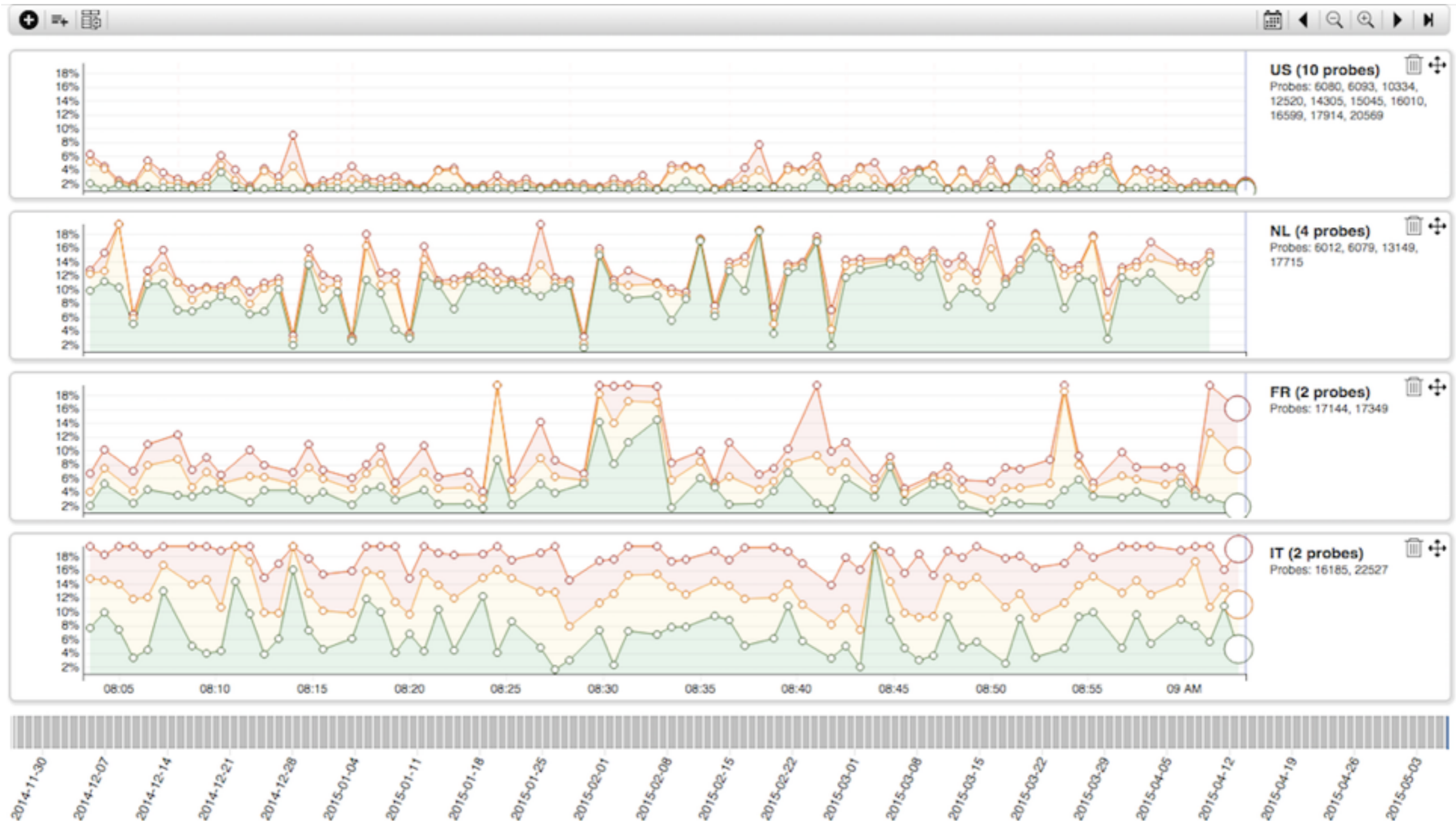
- **RIPE Atlas streaming** is a new architecture that allows users to receive the measurement results as soon as they are sent by the probes
  - Publish/subscribe through sockets
  - Measurement results and connection status events
  - Possibility to replay history (prototype)

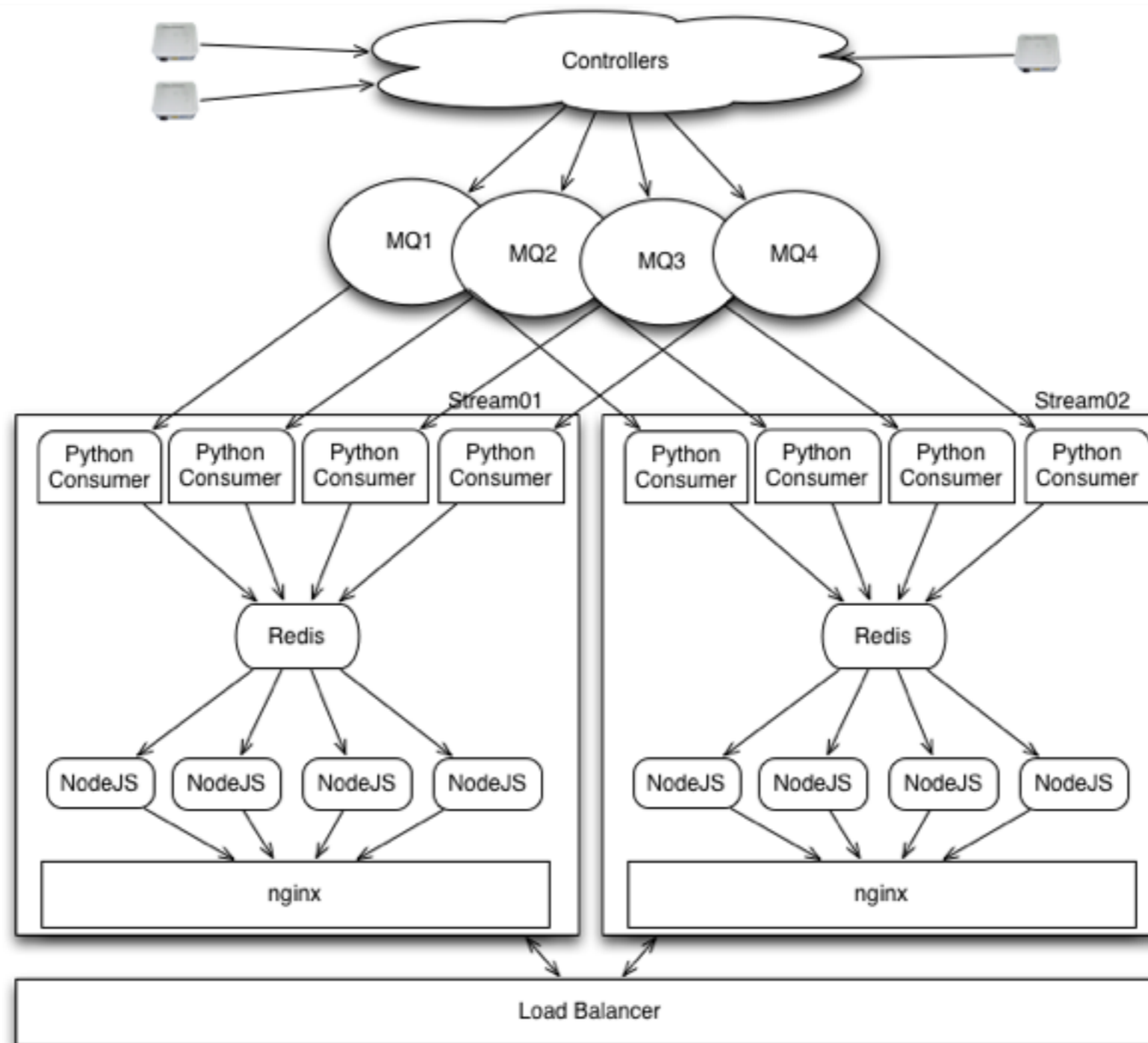


# Probe connection events



# Real-time ping results (prototype)





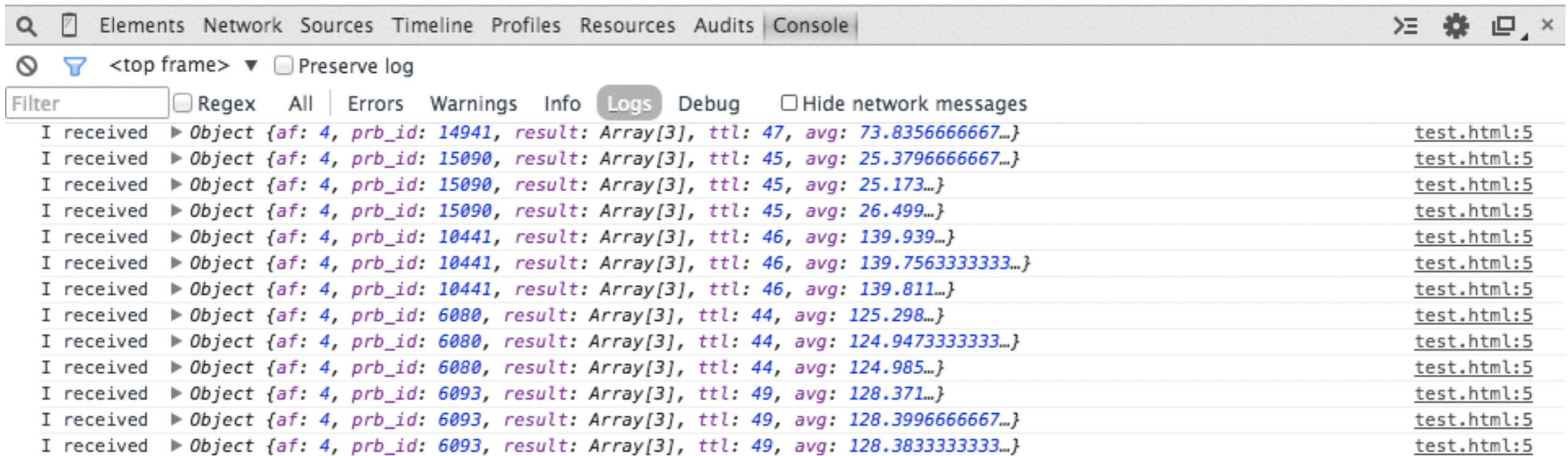
Possible client: a browser with socket.io and a few lines of JS code



```
<script src="http://atlas-stream.ripe.net/socket.io.js"></script>
<script>
  var socket = io("https://atlas-stream.ripe.net:443", { path : "/stream/socket.io" });

  socket.on("atlas_result", function(result){ // Listen results
    console.log("I received ", result);
  });

  socket.emit("atlas_subscribe", { // Subscribe
    stream_type: "result", // Subscription type
    msm: 1791207 // Measurement ID
  });
</script>
```



```
Elements Network Sources Timeline Profiles Resources Audits Console
<top frame> Preserve log
Filter [ ] Regex All | Errors Warnings Info Logs Debug [ ] Hide network messages
I received ▶ Object {af: 4, prb_id: 14941, result: Array(3), ttl: 47, avg: 73.8356666667...} test.html:5
I received ▶ Object {af: 4, prb_id: 15090, result: Array(3), ttl: 45, avg: 25.3796666667...} test.html:5
I received ▶ Object {af: 4, prb_id: 15090, result: Array(3), ttl: 45, avg: 25.173...} test.html:5
I received ▶ Object {af: 4, prb_id: 15090, result: Array(3), ttl: 45, avg: 26.499...} test.html:5
I received ▶ Object {af: 4, prb_id: 10441, result: Array(3), ttl: 46, avg: 139.939...} test.html:5
I received ▶ Object {af: 4, prb_id: 10441, result: Array(3), ttl: 46, avg: 139.7563333333...} test.html:5
I received ▶ Object {af: 4, prb_id: 10441, result: Array(3), ttl: 46, avg: 139.811...} test.html:5
I received ▶ Object {af: 4, prb_id: 6080, result: Array(3), ttl: 44, avg: 125.298...} test.html:5
I received ▶ Object {af: 4, prb_id: 6080, result: Array(3), ttl: 44, avg: 124.9473333333...} test.html:5
I received ▶ Object {af: 4, prb_id: 6080, result: Array(3), ttl: 44, avg: 124.985...} test.html:5
I received ▶ Object {af: 4, prb_id: 6093, result: Array(3), ttl: 49, avg: 128.371...} test.html:5
I received ▶ Object {af: 4, prb_id: 6093, result: Array(3), ttl: 49, avg: 128.3996666667...} test.html:5
I received ▶ Object {af: 4, prb_id: 6093, result: Array(3), ttl: 49, avg: 128.3833333333...} test.html:5
```

- Take part on GitHub
  - <https://github.com/RIPE-NCC/>
  - <https://github.com/RIPE-Atlas-Community/>
- RIPE Atlas streaming documentation
  - <https://atlas.ripe.net/docs/result-streaming/>
- Roadmaps:
  - <http://roadmap.ripe.net/>



- RIPE Atlas: <https://atlas.ripe.net>
  - [atlas@ripe.net](mailto:atlas@ripe.net)
- On Twitter
  - @RIPE\_Atlas, #RIPEAtlas
- On RIPE Labs: <https://labs.ripe.net>

