



RIPE NCC
RIPE NETWORK COORDINATION CENTRE

RIPE NCC Services and Activities

Mirjam Kühne
RIPE NCC

ALNOF 1 | Tirana | 14 October 2017

The RIPE NCC



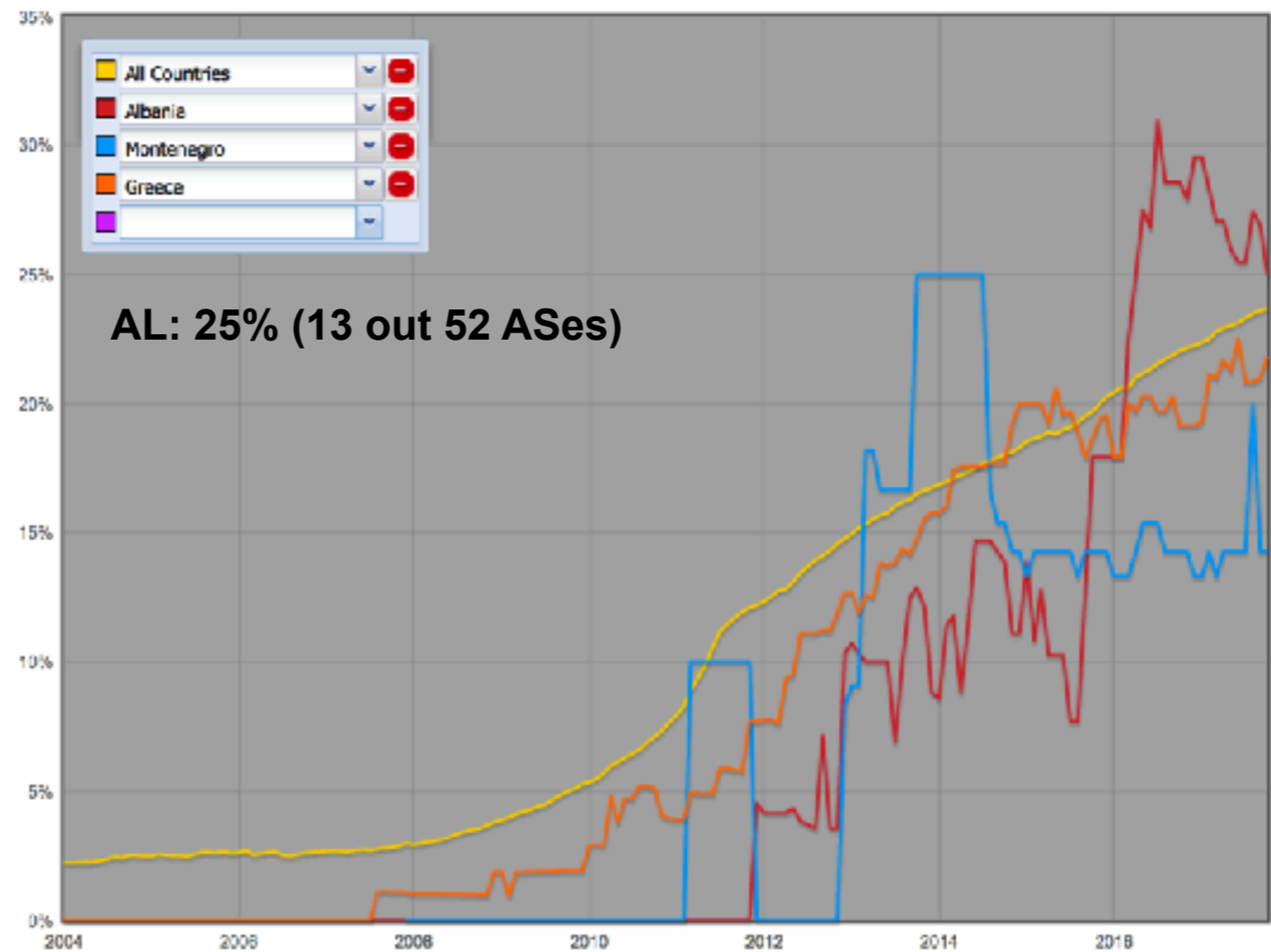
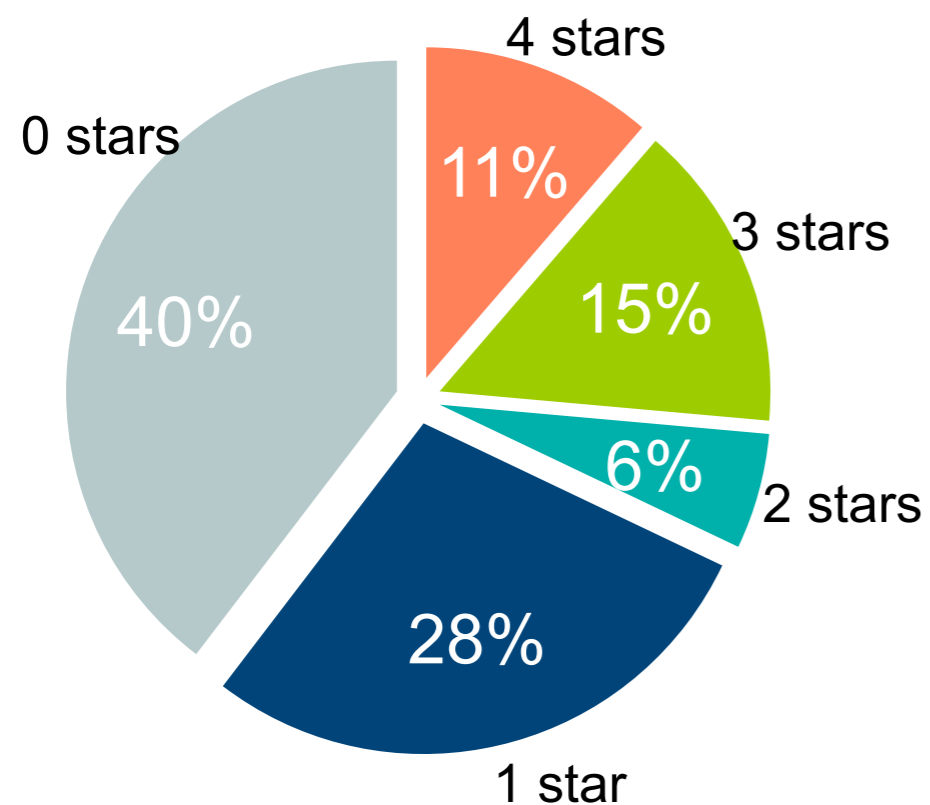
- Established in April 1992
 - Originally under the European academic association
- Membership Association under Dutch law
- 17,000 members in 76 countries
 - 53 members in Albania
- Neutral, independent, not-for-profit



RIR Service Regions



IPv6 in Albania (53 LIRs)



What does the RIPE NCC do?



Member services

- Resource distribution
 - IPv4, IPv6, ASNs
 - Transfers
 - Hijacks
- Training courses
 - Various topics
 - 2,000 participants per year

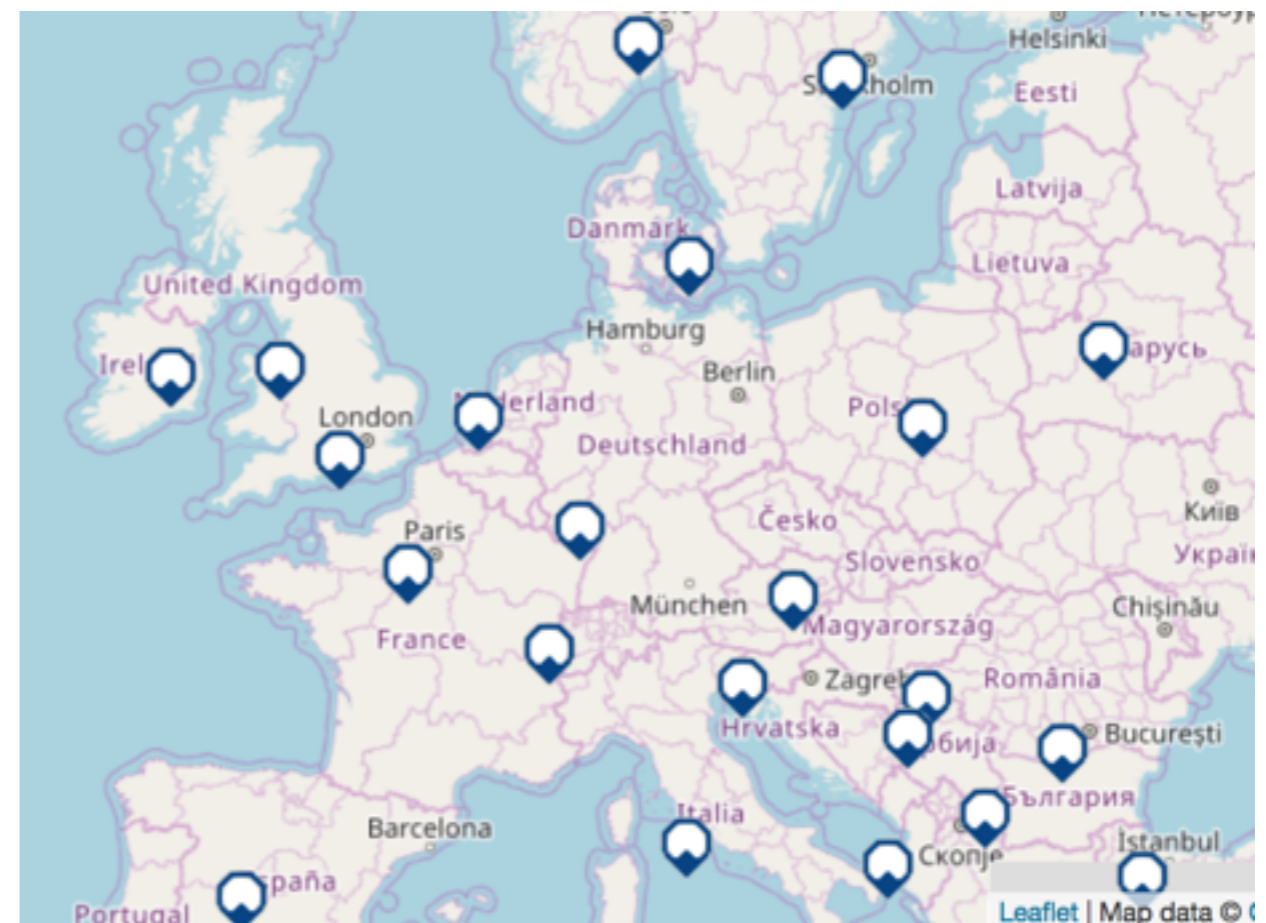
Public services

- Secretariat for RIPE
 - NOG support
- RIPE Database
- DNS services
 - Reverse DNS
 - K-root
- Tools and Data

Supporting local NOGs



- Platform for local NOGs
 - <https://labs.ripe.net/nogs>
- NOGs can exchange experiences
- The RIPE NCC can
 - Help to find speakers
 - Connect to other NOGs
 - Promote the event
 - Sponsor





RIPE Atlas

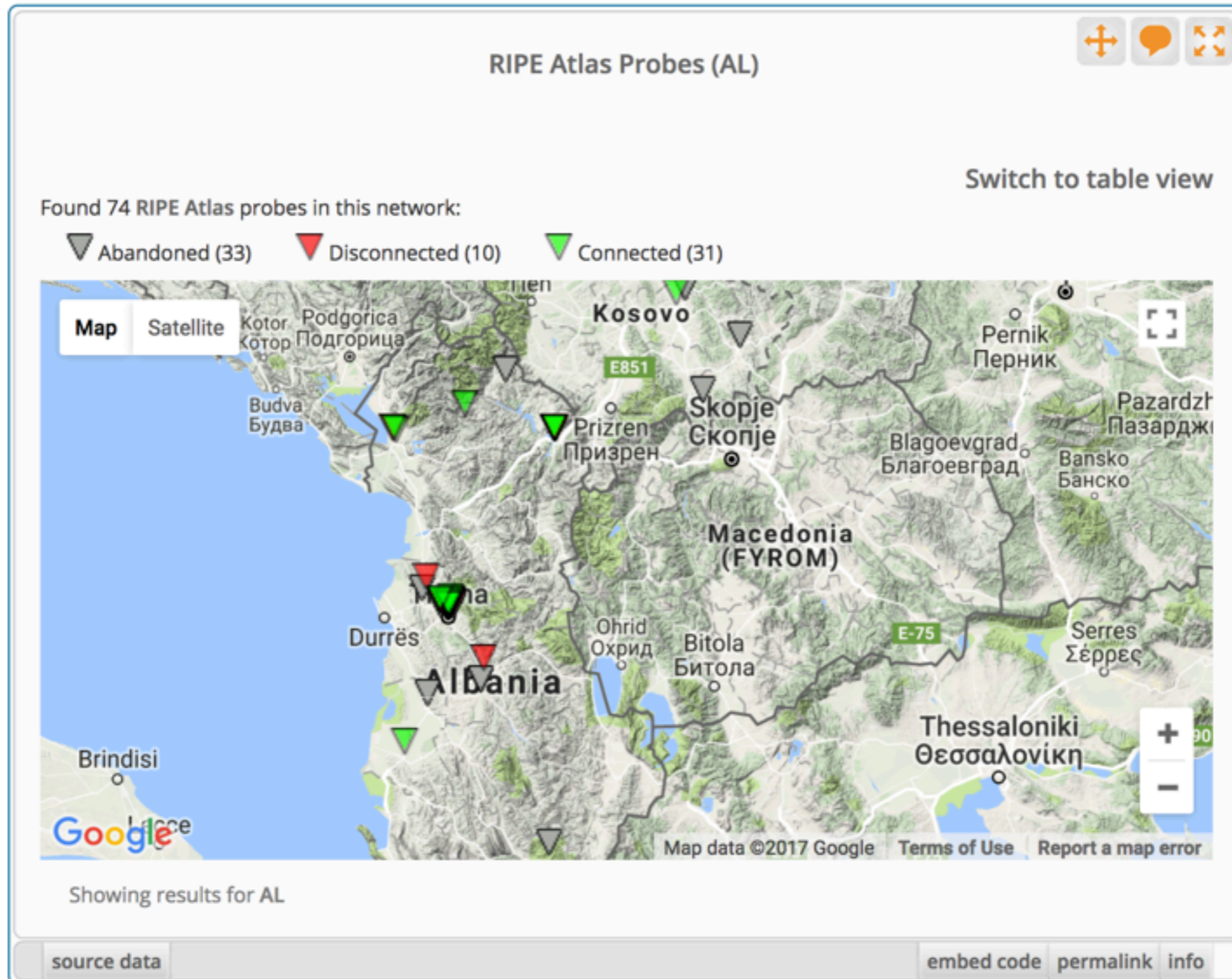
Active Measurements Network



- Probe distribution
 - 10,000+ active RIPE Atlas probes
 - 287 active RIPE Atlas anchors
- Coverage
 - 180 countries covered
 - Originating ASes covered
 - 3,429 (IPv4), 1,297 (IPv6)
- ping, traceroute, DNS, TLS (SSL)



RIPE Atlas in Albania



Popular Features



- Various APIs
 - incl. command-line interface
- TraceMON
- DomainMON



IXP Country Jedi



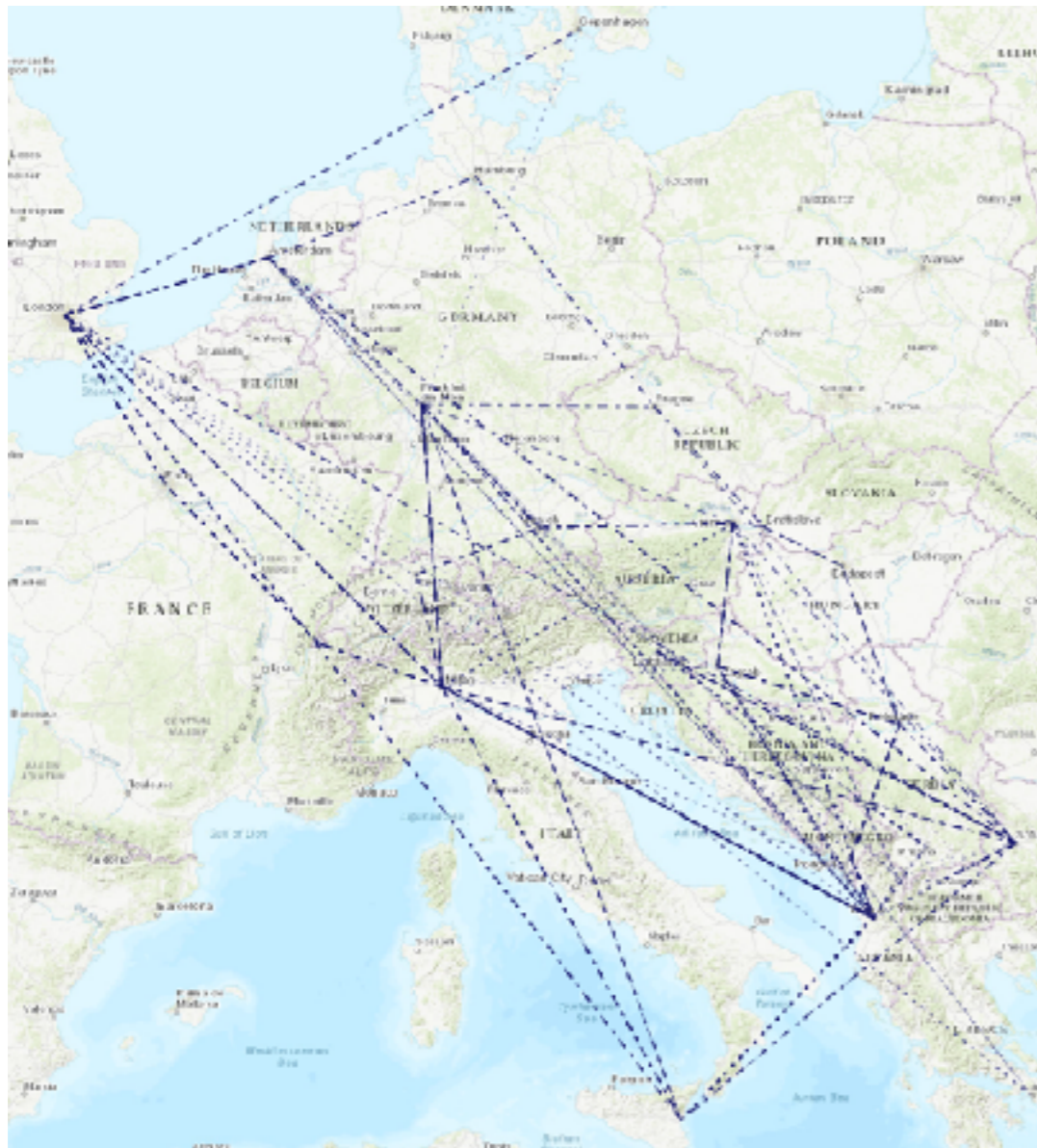
- www.ripe.net/ixp-country-jedi
 - Are the paths between ASes staying in the country?
 - What is the difference between IPv6 & IPv4?
 - How many paths go via a local IXP?
 - Which peer could you add to improve reachability?
- Experimental tool
 - Feature requests welcome!
 - Depends on probe distribution in a country

Difference between IPv4 & IPv6

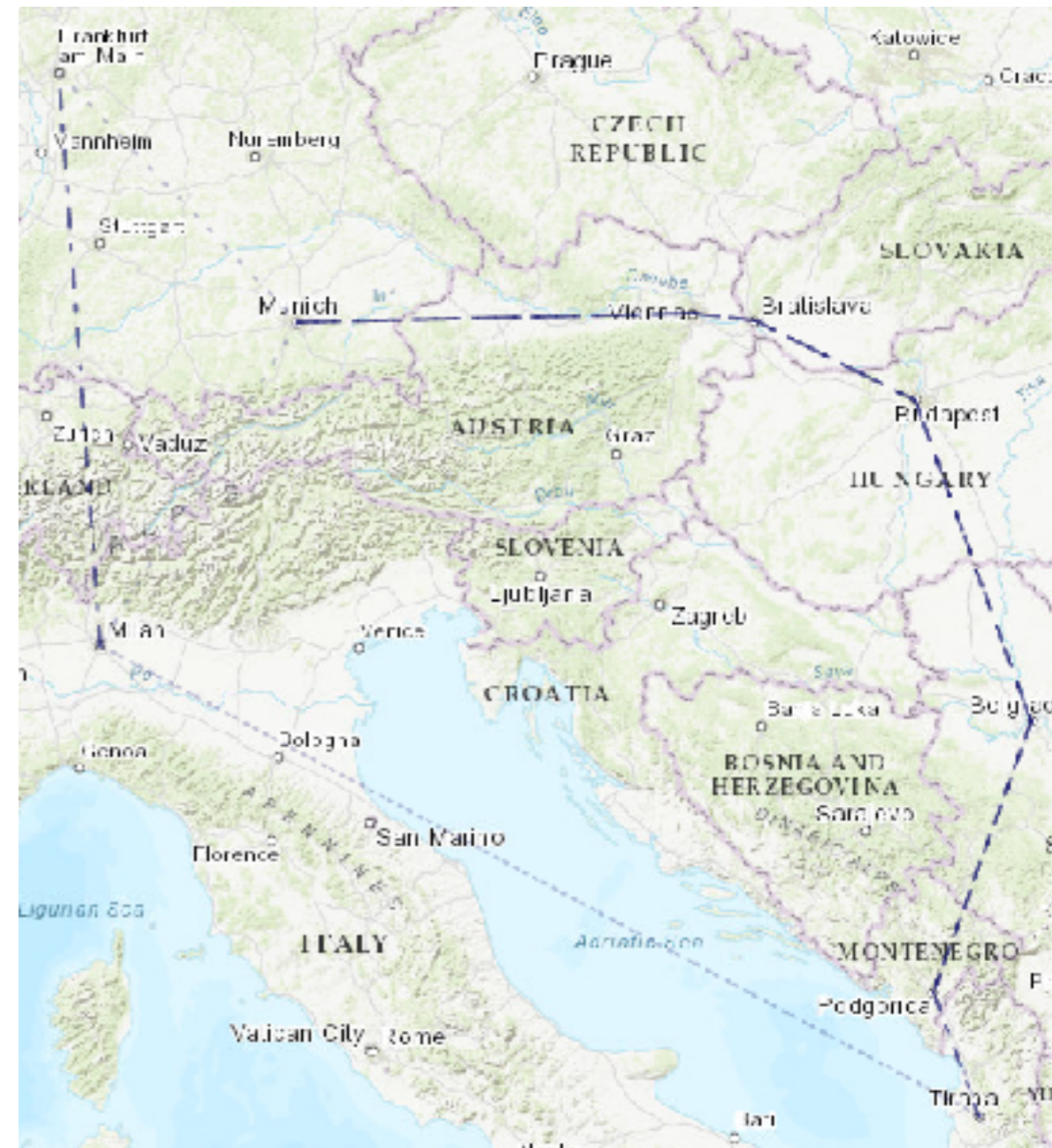


- Do paths stay in the country?

IPv4



IPv6



Paths that go via an IXP in NL

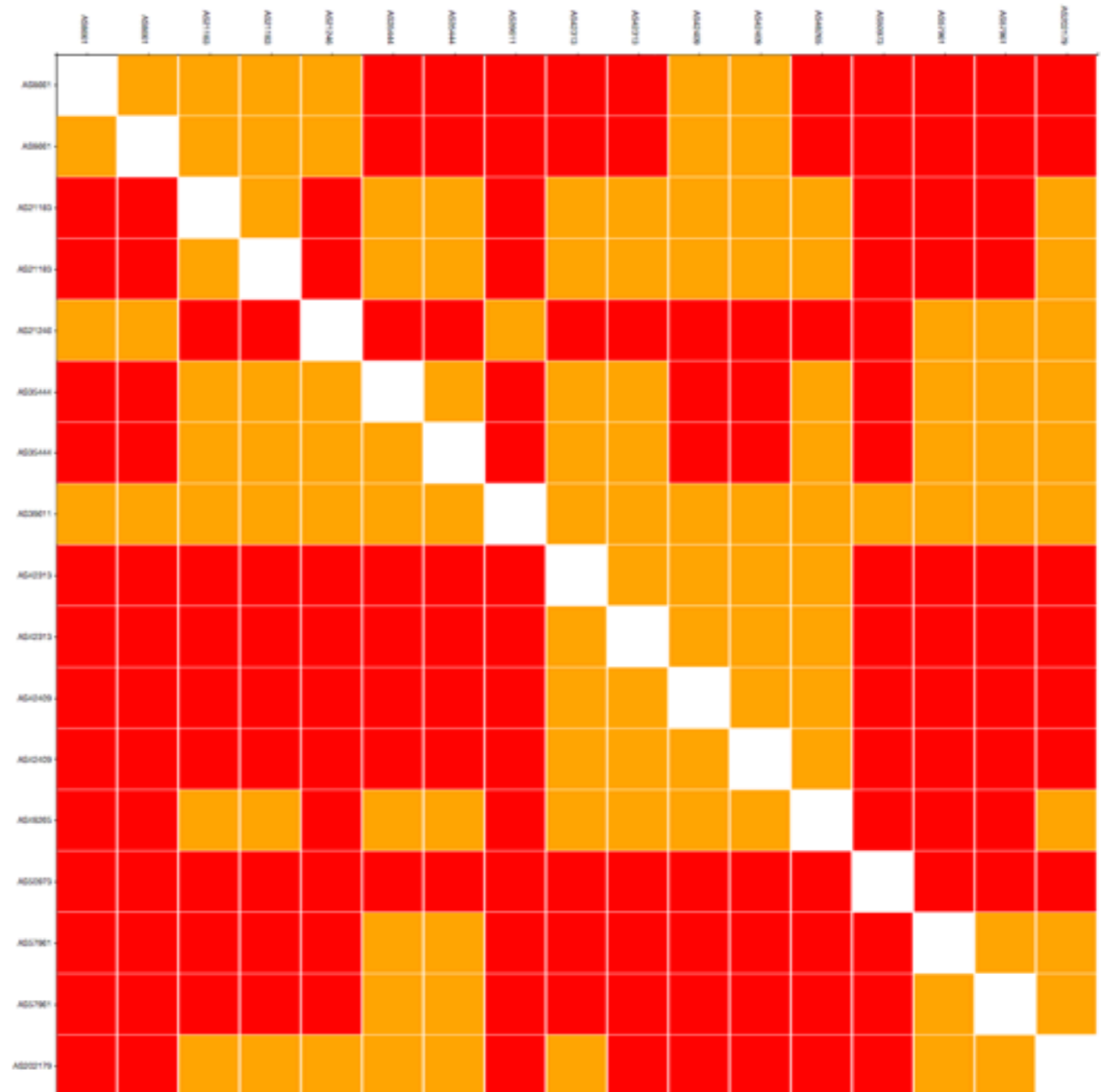


IXP: Yes
Out of country IPs: No

IXP: No
Out of country IPs: No

IXP: Yes
Out of country IPs: Yes

IXP: No
Out of country IPs: Yes





RIPEstat

One stop shop for data

RIPEstat - stat.ripe.net



RIPE NCC
RIPE NETWORK COORDINATION CENTRE

RIPE Database (Whois) Website

Search the content of this website

Manage IPs and ASNs > **Analyse** > Participate > Get Support > Publications > About Us >

You are here: Home > Analyse > Statistics > RIPEstat > 193.0.20.0/23

193.0.20.0/23 Search

permalink

At a Glance (4)

- Routing (9)
- DNS (2)
- Anti Abuse (2)
- Database (9)
- Geographic (2)
- Activity (4)
- Suggestions (1)

+ MyView ?

Prefix Overview (193.0.20.0/23)

✓ **Announced**

This prefix is announced by

AS3333
"RIPE-NCC-AS , NL"

RIR	Status	Registration	Country
RIPE NCC	ALLOCATED	1993-09-01	NL

Show IANA Registry Information

Showing results for 193.0.20.0/23 as of 2015-11-06 16:00:00 UTC

Geoloc (193.0.20.0/23)

Geoloc details

Data is based on MaxMind's GeoLite City data set and valid for the stated query time (see below)

Showing results for 193.0.20.0/23 as of 2015-11-06 00:00:00 UTC



Data Sets

- IP Registry data from all RIRs
- Routing data (RIPE RIS)
 - Collecting BGP data since 1999
 - 160 full-feed peers
- RIPE Atlas data
- External datasets
 - Geolocation, blacklists, bandwidth measurements

Widget API & Data API



- More than 50 widgets
- RIPEstat widgets are embeddable
 - e.g. web pages or NOC interfaces
- Documentation: https://stat.ripe.net/docs/widget_api
- Access to underlying data via data API
- Documentation: https://stat.ripe.net/docs/data_api

Use Cases



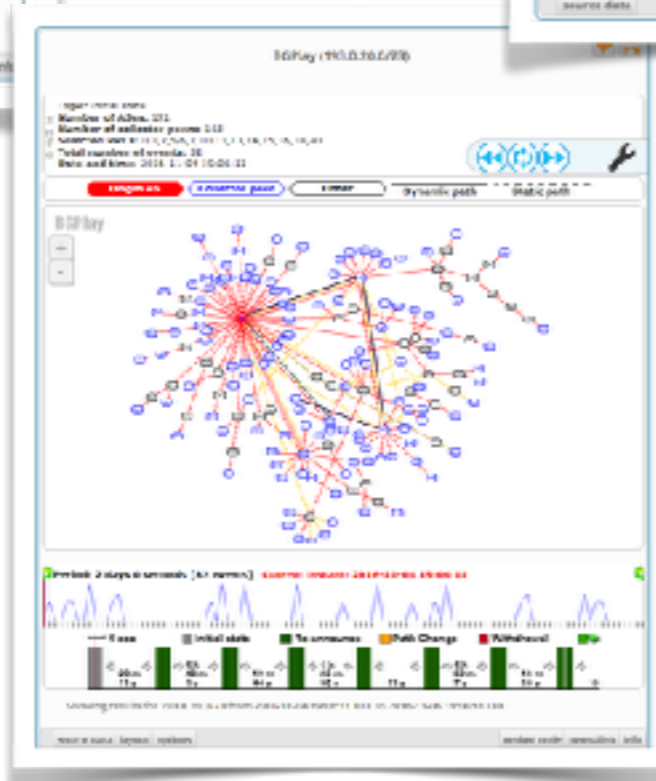
Routing History



Country Statistics



BGPlay



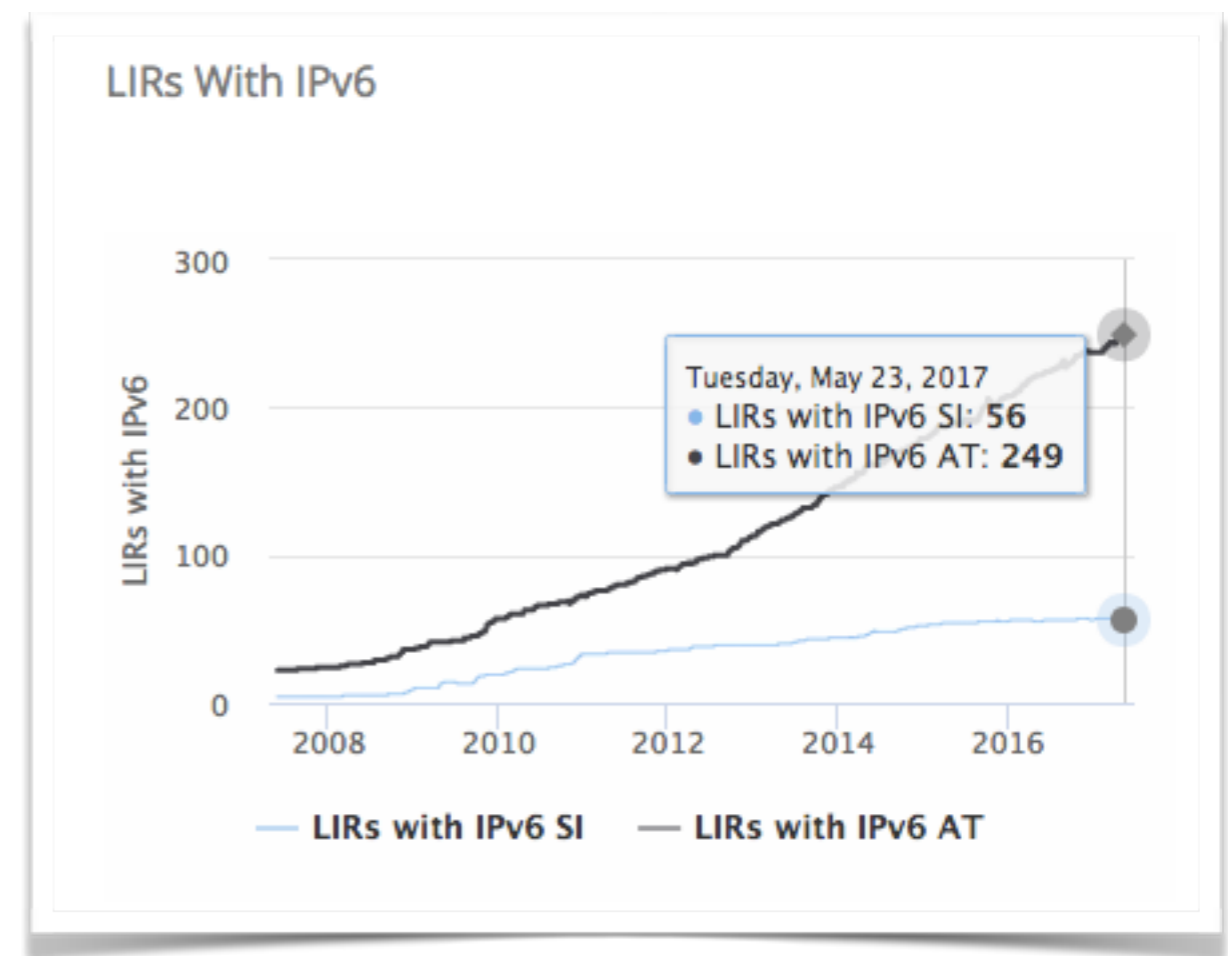
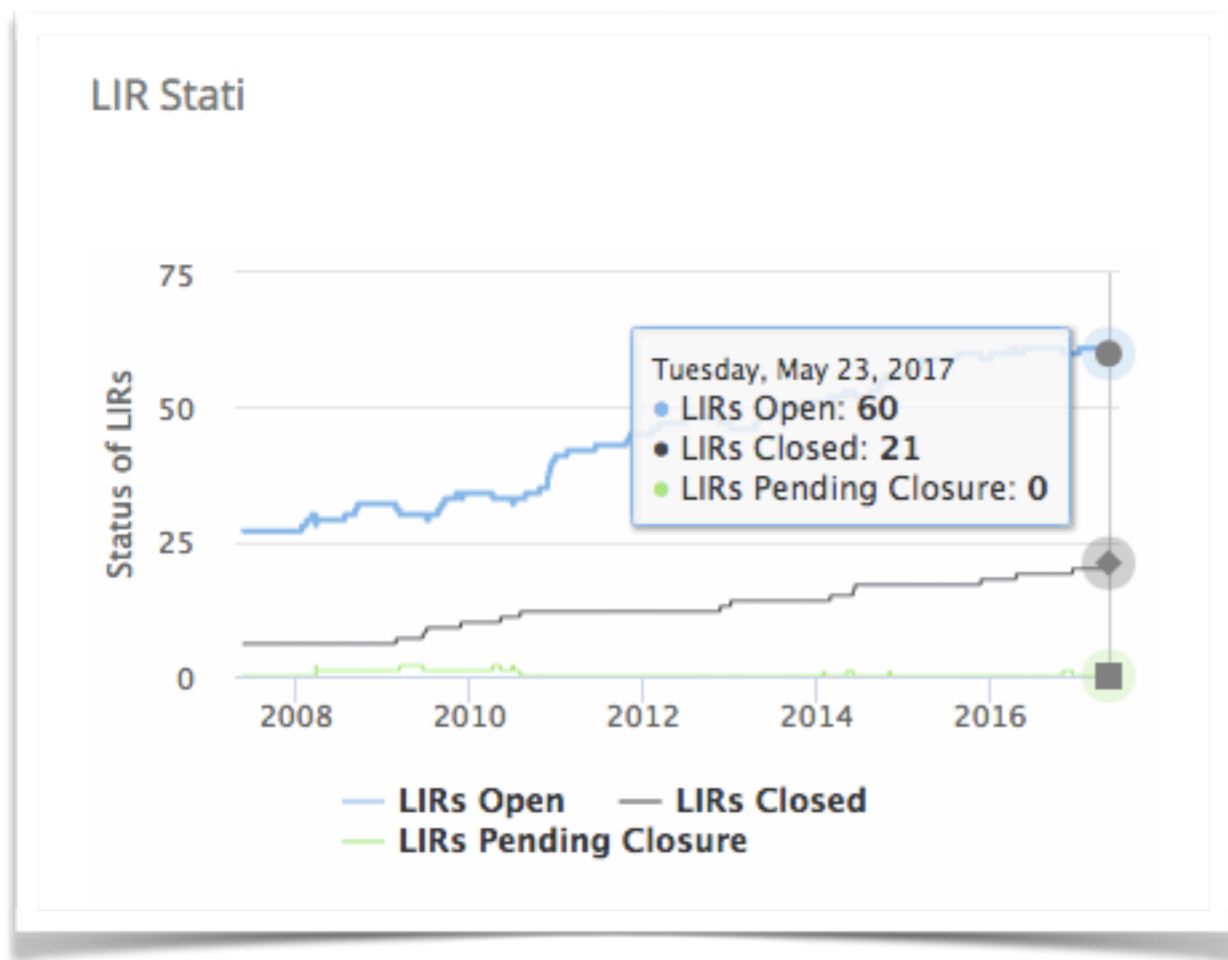
Anti-Abuse Contact



What is next?



- More data
- More visualisations
- Country Reports





RIPE Labs



- RIPE Labs
- Data Repository
- Security
- RIPE NCC Statistics
- RIPE Database
- RIPE Atlas
- RIPEstat
- About
- Network Operator Groups

- Contact us!
- See your ideas on RIPE Labs

Your IP address is:
2001:67c2e8:9::c100:14e6

TagCloud

25-years allocation api ases atlas certification community country cpe database datarepository diversity dns dnsmon dnssec geolocation governance hackathon iot ipv4 ipv6 ipv6day ipv6launch ixp k-root lirs measurements meetings members nat nog operational peering policy reputation research rex ripe ripestat root servers



Statistics

17,245
Number of LIRs



12,515
LIRs with IPv6



4,143,360
IPv4 addresses transferred



10,329
RIPE Atlas probes



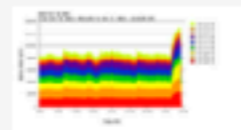
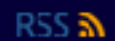
11.69 Million
IPv4 Allocation Pool



View more
statistics



Articles



Anycasting AS197000 More Widely

Anand Buddhdev — 06 Nov 2017

This is an experiment to see if we can increase the capacity and resiliency of the RIPE NCC's authoritative DNS service (AS197000). This service hosts all the reverse DNS zones, ripe.net and provides secondary service for various ccTLDs.... [Read more](#)

Tags: dns security



8 comments



4 likes, 0 dislikes



IPv6-only? IPv4-as-a-service?

Jordi Palet Martinez — 03 Nov 2017

We are starting to hear "IPv6-only" more often. However, it doesn't seem to be clear what exactly this means. I will attempt to explain it in this article.... [Read more](#)

Tags: ipv6



0 comments



2 likes, 0 dislikes

Recent RIPE Labs Articles



- IPv6 Address Planning at GavleNet

<https://labs.ripe.net/Members/teklov/ipv6-address-planning-in-gavlenet>

- Transit and Peering

https://labs.ripe.net/Members/ross_mcfarland_1/transit-and-peering-how-your-requests-reach-github

- The Future of DNSSEC at the RIPE NCC

<https://labs.ripe.net/Members/anandb/the-future-of-dnssec-at-the-ripe-ncc>

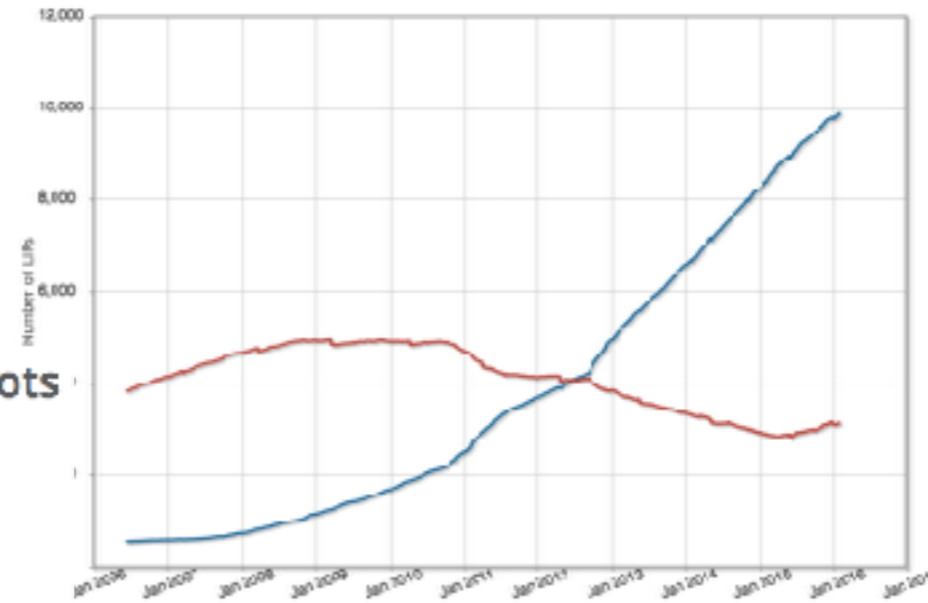
- RIPE Atlas Probes as IoT Devices

<https://labs.ripe.net/Members/kistel/ripe-atlas-probes-as-iot-devices>

RIPE Labs Statistics Dashboard



LIRs With and Without IPv6



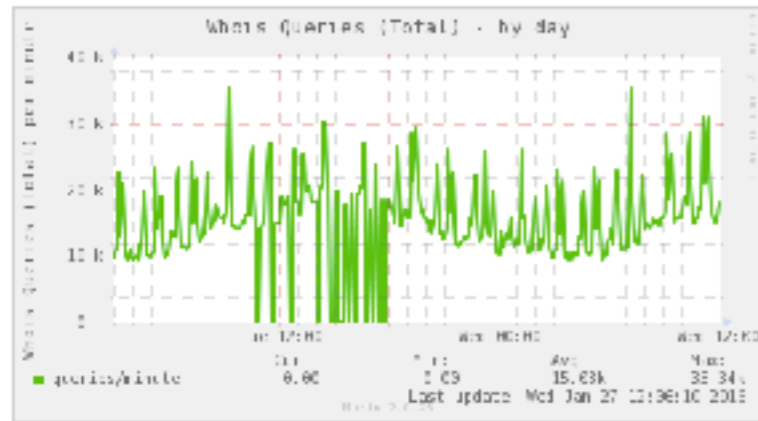
Tags

allocation ases atlas
 certification country
 database ipv4 ipv6
 k-root lirs meetings
 ripestat routing syria
 transfers

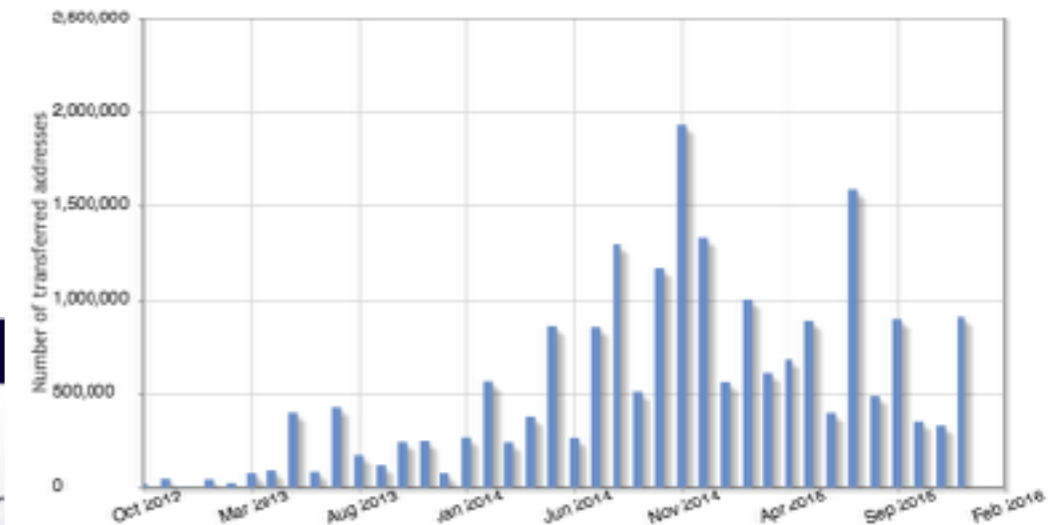
RIPE Database Server - Operational Plots

Query rate:

The number of RIPE Database queries we serve in total



IPv4 Addresses Transferred



Statistics

15,531

Number of LIRs



11,611

LIRs with IPv6



452,864

IPv4 addresses transferred

9,525

RIPE Atlas probes



13.57 Million

IPv4 Allocation Pool



View more statistics





References

- RIPE Atlas: atlas.ripe.net
- IXP country Jedi: www.ripe.net/ixp-country-jedi
- RIPEstat: stat.ripe.net
- IPv6 RIPEness: ipv6ripeness.ripe.net
- IPv6 ASNs: v6asns.ripe.net
- RIPE Labs: labs.ripe.net



Questions



mir@ripe.net
[@mir_ripe_labs](#)